



## GRAND SPORT GT GC400GT

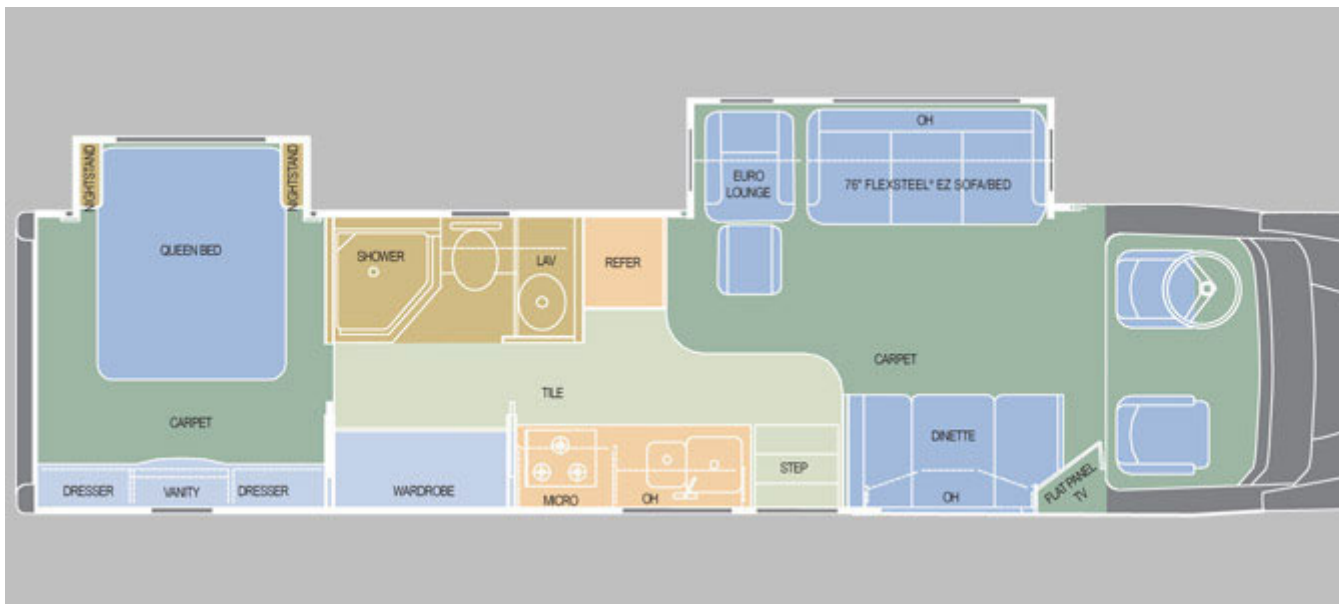
Combine a Mercedes Benz® MBE 450-hp engine with a rugged Freightliner® chassis, and the Grand Sport GC400GT is pure power packed with 20 tons of towing capability. This extraordinary machine is the antithesis of those look-alike buses. It is rugged, lean and very aerodynamic.

### SPECIAL FEATURES

- Corian® countertops
- Hardwood wardrobes
- Large flat screen TV & Bose® LS 28 DVD/CD Surroundsound® system
- Freightliner® Columbia chassis
- 450-hp MBE 4000-450 engine
- Optional 40,000-lb. towing capacity
- Ultraleather upholstery
- One-year free Club Max membership



*Fine furnishings, residential-style woodwork and elegant upholstery highlight the interior.*

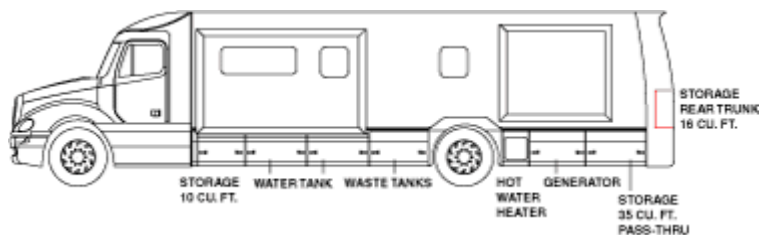
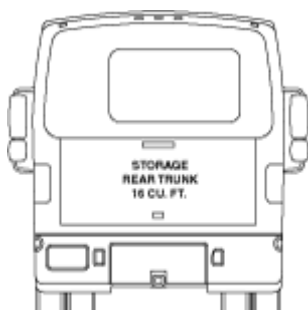
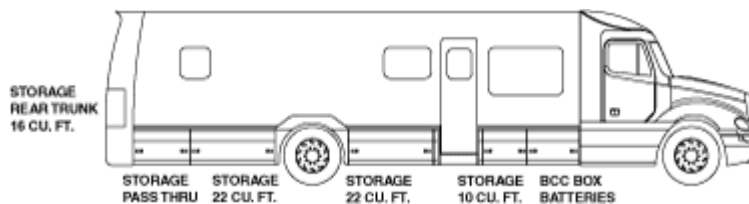


## GRAND SPORT GT GC400GT

Great design is more than just colors, fabrics and exterior styling. It also extends to the floorpla floorplan is designed to be roomy, comfortable and convenient.

### KEY DIMENSIONS

Overall length	39' 6"
Interior width	7' 9"
Exterior width	8' 5"
Interior height	6' 6"
Exterior height	11' 9"
GVWR	36,700 lb.
GCWR	44,500 lb.
Wheelbase	280"
Fuel capacity	100 gal.
Water capacity	
Fresh	95 gal.
Grey	36 gal.
Black	33 gal.
LPG capacity	48 gal./160 lb.
Sleeping	





### Chassis Features

Engine (Standard): Freightliner® Columbia MBE 4000-450  
 Horsepower: 450-hp @ 2000 RPM  
 Torque: 1550 lb./ft. @ 1100 RPM

Transmission: Six-speed Allison® 4000TRV auto push button

Fuel tank: 140 gal.

Brakes: Full air drum (ABS)  
 Engine brake: Mercedes® off/low/high comp and exhaust

Front axle: 14,600 lb.  
 Rear axle: 23,000 lb.

Suspension (front): Taperleaf 14,000-lb.  
 Suspension (rear): Airliner 23,000-lb.

Rear axle ratio: 3.73

Alternator: 145-amp

Chassis batteries: Three Alliance 1131 Group 31 12v maintenance free

Battery disconnect: Below driver seat

Block heater: 1500-watt/115-volt

Aluminum wheels: Standard

Tires: Michelin® XZE 275/80 R22.5 14-ply radial

Auxiliary driving lights

ICC lights

### Exterior Features

Paint  
 Option 1: Tawny Ridge (tan)  
 Option 2: Latte (taupe)  
 Option 3: Bay Moon (black & silver)  
 Option 4: Bordeaux (burgundy)  
 Option 5: Ravenwood (black & gold)

Hydraulic jacks: Four-point full automatic leveling jacks

Hitch (Standard): 14,000-lb. capacity  
 Hitch (Optional): 40,000-lb. capacity

Awning (Standard): A&E box awning  
 Awning (Optional): Girard power awning  
 Optional window awnings

Lighted grab handle

External storage: Fiberglass doors/ fiberglass box/ lighted  
 Rear trunk

Docking lights: 8

Air service line

Power step at entry door

Exterior gas grill option

Optional AC/DC portable refrigerator/freezer

### General Interior Features

Interior decors  
 Option 1: Tawny Ridge (tan)  
 Option 2: Latte (taupe)  
 Option 3: Bay Moon (black & silver)  
 Option 4: Bordeaux (burgundy)  
 Option 5: Ravenwood (black & gold)

Flooring  
 Living Room/Bedroom: Deluxe sculpted carpet  
 Kitchen/Bath: Hardwood  
 Flooring option: Ceramic tile

Cabinets  
 Wood

TV: 23"  
 Cable-ready  
 Satellite (Standard): Auto  
 Satellite (Optional): In-motion

Lighting  
 Ceiling: Deluxe residential style  
 Floor: Night lighting throughout

Sound system  
 Standard: Bose® LS 28 DVD/Surroundsound® System  
 Optional: Bose® LS 38 DVD/Surroundsound® System

Ceiling material: Deluxe vinyl padded ceiling

Interior wall material: Décor wallboard

Window  
 Shades: Day/night pleated  
 Valence: "Dyna Style" matched fabric lambrequin

Furniture  
 Sofa (Standard): Flexsteel® EZ bed/sofa  
 Sofa (Optional): Hide-A-Bed with air mattress

Fantastic fans: w/ rain sensor

Safety features: LPG leak detector, 12-volt carbon monoxide detector, smoke detector, fire extinguisher

### Kitchen Features

Countertop: Corian® large double-bowl sink w/ cover

Faucet: Single handle faucet with pull-out spray head

Cook top: Electric three-burner

Microwave: Convection microwave

Refrigerator: Dometic® 10 cu. ft. (stainless steel)

Dinette: Booth w/ Corian® table  
 120-volt outlet & phone jack

Flooring: Hardwood  
 Optional: Ceramic tile

### Bathroom Features

Countertop: Corian® lavatory top with integrated sink

Flooring: Hardwood  
 Optional: Ceramic

Medicine cabinet: Deluxe

Shower: One-piece fiberglass shower with skylight

Toilet: Thetford® China

Vent fan: Fantastic® w/ rain sensor

Washer/Dryer (Optional)

### Bedroom Features

Sleeping: 74" x 60" RV Queen I.S. mattress, 74" x 48" Flexsteel® EZ bed, 66" x 36" convertible dinette, (74" x 60" Hide-A-Bed with air mattress optional)

Bedroom TV: 19"

Flooring: Deluxe sculpted carpet

Wardrobes: Hardwood

Bedsprad & Pillows: Designer

Night stands: Hardwood

Vent fan: Fantastic® fan w/ temp control and rain sensor

### Driver Compartment

Backup camera: Color  
 Two side rear view cameras: Optional

GPS navigation system: Optional

Power steering, Windows

Cab doors: Power door locks and window

Windshield wipers: Intermittant

Cab radio: AM/FM/CD radio

Cab mirrors: Aero Mekra color matched/h/e

ICC lights

Cruise control

Roof mounted dual air horns

Chassis battery disconnect

Manual air-dump switch

Full front cab sound insulation

CB radio: Standard

Dash-mounted air-restriction indicator

Trailer brake hand control valve

Overhead directional reading lights

Dash instrumentation: Speedometer, engine coolant temp, pyrometer rear axle ammeter, primary/secondary air pressure digital voltmeter, brake application air gauge, transmission oil temp gauge, turbo air pre-tachometer

Rear sonar (Optional)

Tire air pressure monitor (Optional)

### Construction Highlights

Floor: Heavy-duty 4" E-coated steel frame rubber isolators

Walls: Sculptured, aerodynamic, fiberglass sidewall panels  
 Aluminum framed: Square-tube aluminum sidewall w/ all wall penetrations box frame  
 Windows: Panoramic bonded, tinted

Roof: Square-tube aluminum-framed, one-radius fiberglass

Insulation  
 Floor: R-11 solid block foam  
 Sidewall & Ceiling: R-8 solid block foam

Cab: Steel safety cage surrounding transit to coach

Front transition aerodynamic fiberglass

Molded fiberglass rear body cap

Slide outs: Living room - hydraulic/Bedroom with side cross flow vent windows

### Utilities

Heating - Furnace: 20,000 & 40,000 BTU : LP- gas  
 Single, digital thermostat for heating & c  
 Optional heating systems: Hydro-hot he water

Electrical  
 Coach batteries: Three 12-volt Group 31 315-amp/hr.  
 Inverter: 2000 watt power  
 Optional: 3000 watt  
 Power cord: 50-amp  
 Generator (Standard): Onan® 7.5  
 Auto generator start: Optional  
 Coach battery disconnect switch by entry

Cooling: Dual, low profile roof air conditioner BTU with heat pumps  
 Insulated ceiling air ducts w/ controllable

Option 1: Natural Cherry  
Option 2: Stained Cherry  
Option 3: Natural Maple  
Hinges: Deluxe, hidden cabinet hinges  
Latches: Posi-Lock

Auxiliary 12-volt in-dash receptacle  
Engine air conditioning  
Driver seat: Lexington® ultraleather Bostrom - air/swivel pedestal  
Passenger seat: Lexington® ultraleather Bostrom - air/swivel pedestal

Plumbing/Water  
Water heater: Ten-gal. Suburban® LP -  
12-volt hi-capacity water pump  
Heated water and holding tanks  
Fresh water hose & power reel



**GRAND SPORT GT GC400GT**

---

Incredible luxury is everywhere inside your GC400GT. Elegant ultraleather upholstery, hardwood cabinetry and woodwork, LCD TV, Cobra® CB radio and more highlight the interior.



The beautiful dinette features a Corian® table and booth-style seating.



Incredible luxury is everywhere - from the exceptional fabrics to the elegant hardwood cabinetry to the pre-ultraleather upholstery.



The convenient kitchen also features elegant stainless steel appliances, Corian® countertops and an electric three-burner cooktop.



The roomy cockpit contains a standard CB Radio and everything the driver and passenger need for comfort at their fingertips.



The rear trunk offers plenty of extra storage space.

